

Guideline for Qualified Captures

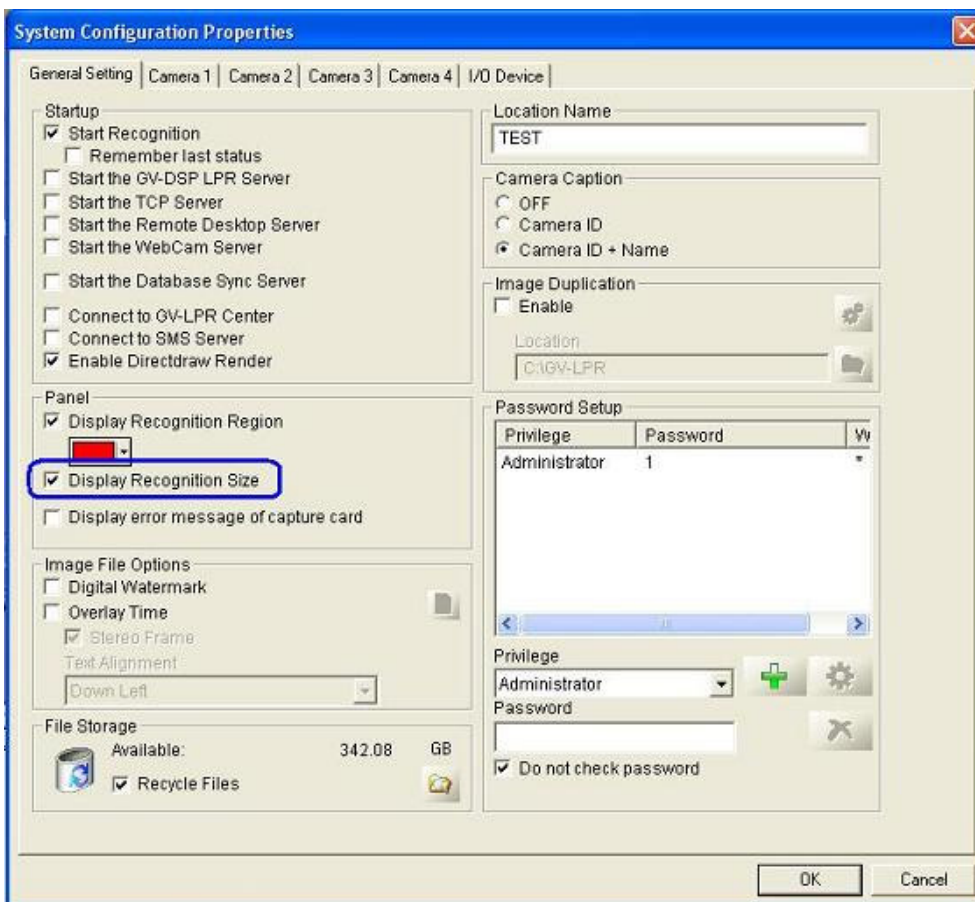
***Introduction

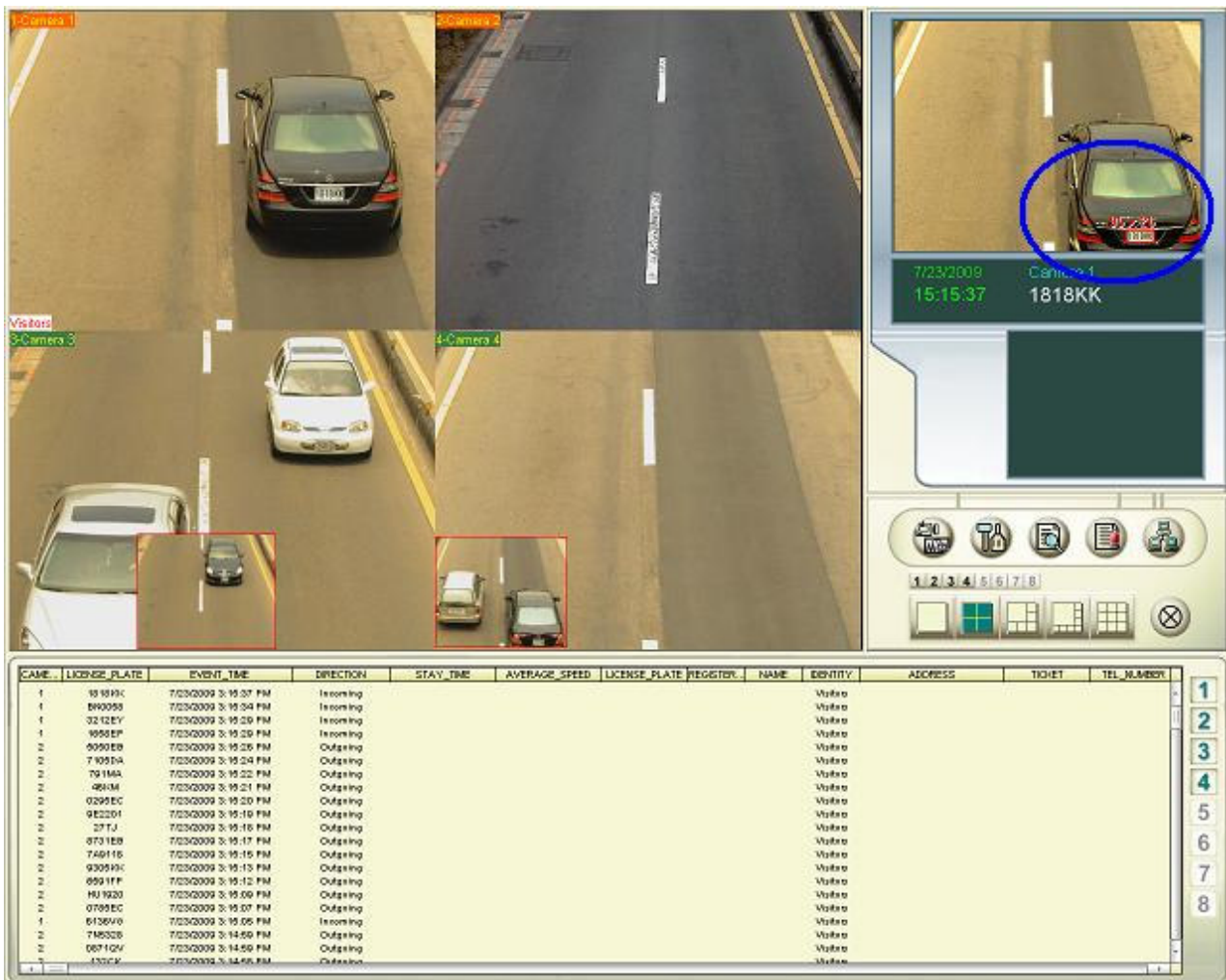
For customer who is using GV-LPR system or GV-DSP LPR, please study this document as set-up instruction. The “required standard” will enable the system to reach optimized recognition accuracy.

***Optimized Plate Size

The optimized character height on vehicle plate is 32 pixel. There are two methods to check captured character height.

1. Enable “**Display recognition size**” in [System Configuration](#), the character height and width will be showed during recognition automatically.

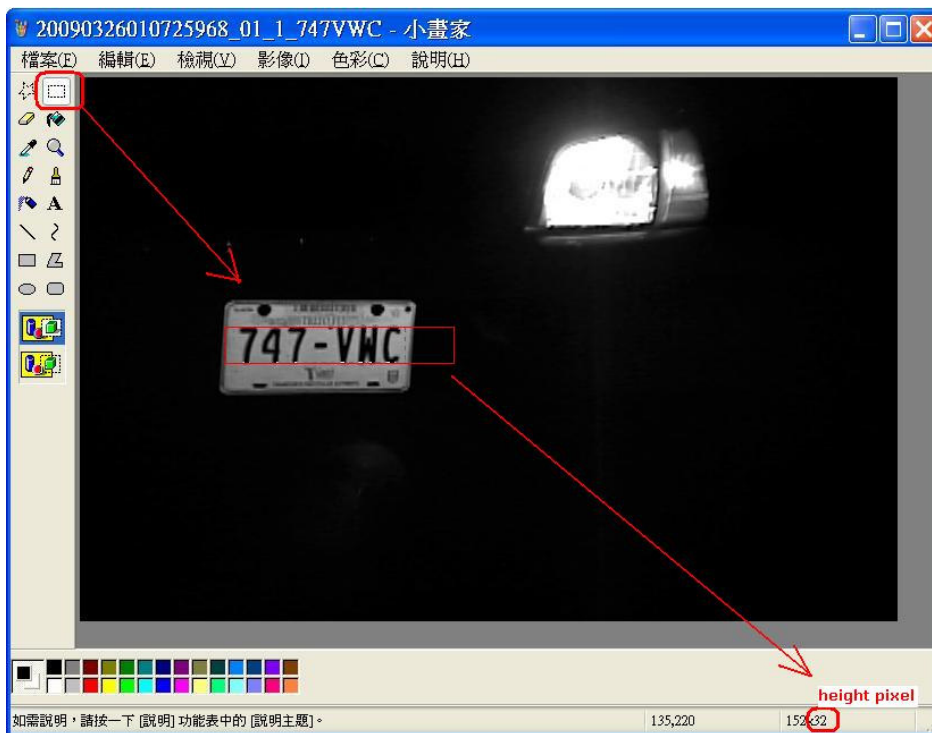




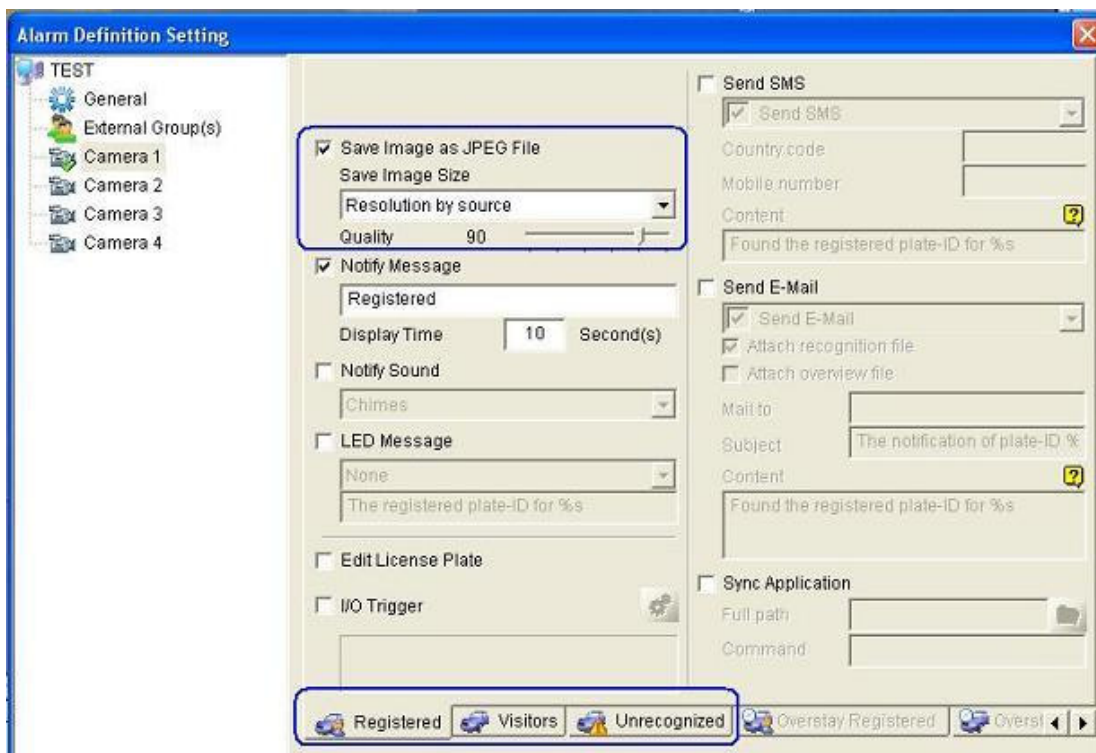
The interface displays four camera feeds (1-Camera 1, 2-Camera 2, 3-Camera 3, 4-Camera 4) showing a road scene. A vehicle tracking window on the right shows a car with license plate 1818KK, dated 7/23/2009, at 15:15:37. Below the feeds is a control panel with icons for various functions and a grid of buttons labeled 1 through 8.

CAME	LICENSE PLATE	EVENT TIME	DIRECTION	STAY TIME	AVERAGE SPEED	LICENSE PLATE REGISTER	NAME	IDENTITY	ADDRESS	TICKET	TEL. NUMBER
1	95 959C	7/23/2009 3:15:37 PM	Incoming					Volvo			
1	840559	7/23/2009 3:15:34 PM	Incoming					Volvo			
1	32 12EV	7/23/2009 3:15:20 PM	Incoming					Volvo			
1	9595EP	7/23/2009 3:15:20 PM	Incoming					Volvo			
2	9595EB	7/23/2009 3:15:26 PM	Outgoing					Volvo			
2	7 1051A	7/23/2009 3:15:24 PM	Outgoing					Volvo			
2	79 11MA	7/23/2009 3:15:22 PM	Outgoing					Volvo			
2	4810M	7/23/2009 3:15:21 PM	Outgoing					Volvo			
2	0295EC	7/23/2009 3:15:20 PM	Outgoing					Volvo			
2	9E2201	7/23/2009 3:15:19 PM	Outgoing					Volvo			
2	27 TJ	7/23/2009 3:15:18 PM	Outgoing					Volvo			
2	873 1EB	7/23/2009 3:15:17 PM	Outgoing					Volvo			
2	74911E	7/23/2009 3:15:16 PM	Outgoing					Volvo			
2	93059C	7/23/2009 3:15:13 PM	Outgoing					Volvo			
2	959 1FF	7/23/2009 3:15:12 PM	Outgoing					Volvo			
2	HJ 1920	7/23/2009 3:15:09 PM	Outgoing					Volvo			
2	0799EC	7/23/2009 3:15:07 PM	Outgoing					Volvo			
1	6136V10	7/23/2009 3:15:06 PM	Incoming					Volvo			
2	7M92CB	7/23/2009 3:14:59 PM	Outgoing					Volvo			
2	067 1GV	7/23/2009 3:14:56 PM	Outgoing					Volvo			
2	170CV	7/23/2009 3:14:56 PM	Outgoing					Volvo			

2. Check captured snapshot, they are saved under C:\GV-LPR\DataStorage
Please use Paint software to check character height.



Remark: if you use mega pixel IP-cam as recognition camera, please [save original image size](#)
“Resolution by source” in Alarm definition setting.



***Optimized Capture Quality

LPR Camera

We recommend **GV-LPR CAM for capture of reflective car plates**. In case GV-LPR CAM doesn't fulfill your application, here is our suggestion for third party LPR camera:

1. **TV line:** at least TVL550
2. **Sensor:** 1/3" CCD or above.
3. **Configurable shutter speed and focus** to capture moving vehicle plates. (Both auto shutter speed and auto focus mode are not recommended for capture of running vehicles)
4. **Eliminate background image** (our purpose is to get clear characters without unnecessary confusion from background image)

Example: Without filter

v.s.

With filter



5. **Headlight resistance:** to avoid over-exposed images during night time.

Example: Without headlight resistance

v.s. With headlight resistance



Good image quality 1:



Good image quality 2:



Unqualified images, please try to avoid:
Insufficient Contrast



Incorrect Focus/ Shutter Speed



Overexposed



Shadow on plates



Hollow



Interlaced (jagged)

