

**Software**  
**ACTi Streaming Explorer**  
**v1.00.02.01**

# **User's Manual**



[www.acti.com](http://www.acti.com)



## **APP-2100**

This document is copyrighted, 2003-2005, by ACTi Corporation. All rights are reserved. ACTi Corporation reserves the right to make improvements to the products described in this manual at any time without notice.

No part of this manual may be reproduced, copied, translated or transmitted in any form or by any means without the prior written permission of the original manufacturer. Information provided in this manual is intended to be accurate and reliable. However, the original manufacturer assumes no responsibility for its use, or for any infringements upon the rights of third parties that may result from its use.

All other product names or trademarks are properties of their respective owners.

v1.00.02.01 Edition Oct, 2005

# Table of Contents

<b>1</b>	<b><i>Introduction</i></b>	<b><i>1</i></b>
	System requirement	1
	Installation	1
<b>2</b>	<b><i>Getting Started</i></b>	<b><i>2</i></b>
	Start ACTi Streaming Explorer	2
	Connection Setting	3
<b>3</b>	<b><i>Streaming Explorer User Interface</i></b>	<b><i>3</i></b>
	Understating the User Interface	4
	Panel Definition	4
	Connection Information	5
	PTZ Control	6
	Zoom Control	6
	Tour Control	7
	OSD Control	8
	Others Control	8
	Preset Control	9

# Table of Figures

<b>Figure 1.</b> Login Page .....	2
<b>Figure 2.</b> The Setting of Connection .....	3
<b>Figure 3.</b> ACTi Streaming Explorer User Interface.....	4
<b>Figure 4.</b> ACTi Streaming Exlporer v1.0 panel Definition .....	5
<b>Figure 5.</b> Connection Information .....	5
<b>Figure 6.</b> PTZ Control Panel.....	6
<b>Figure 7.</b> PTZ Control Panel.....	6
<b>Figure 8.</b> Tour Control Panel .....	7
<b>Figure 9.</b> OSD Control Panel.....	8
<b>Figure 10.</b> Others Control Pane .....	8
<b>Figure 11.</b> Preset Control Pane .....	9



# 1

## Introduction

ACTi streaming explorer is designed to meet advanced control needs IP speed dome, IP PTZ device or any PTZ device connected to our video server. For multi-channel management and recording, please use our Streaming Activator software. You can find detailed information at

[http://www.acti.com/support/SW\\_download.asp](http://www.acti.com/support/SW_download.asp)

## System requirement

In order to run ACTi Streaming Explorer successfully, system requirements are listed as follow:

- Pentium 4 2.8GHz
- 256 MB memory
- Internet Explorer v6.0 (or above) with SP1
- Windows XP SP2, Windows 2000 Server

## Installation

By default, in Streaming Explorer package, click on “**setup.bat**” file, the whole package will be installed under “**C:\Explorer**”, and all protocols will be installed under “**C:\Explorer\Protocol**”.



**IMPORTANT:** Destination directory is decided in the **setup.bat** program already. Please make sure user has the permission to create **C:\Explorer** and **C:\Explorer\Protocol** accordingly.

# 2

## Getting Started

### Start ACTi Streaming Explorer

To start ACTi Streaming Explorer, double-click the “c:\Explorer\StreamingExplorer.htm”



**IMPORTANT:** To avoid problems and conflicts in the video subsystem, run only one instance of ACTi Streaming Explorer at one time.

After double-click “c:\Explorer\StreamingExplorer.htm”, you will see a login page.

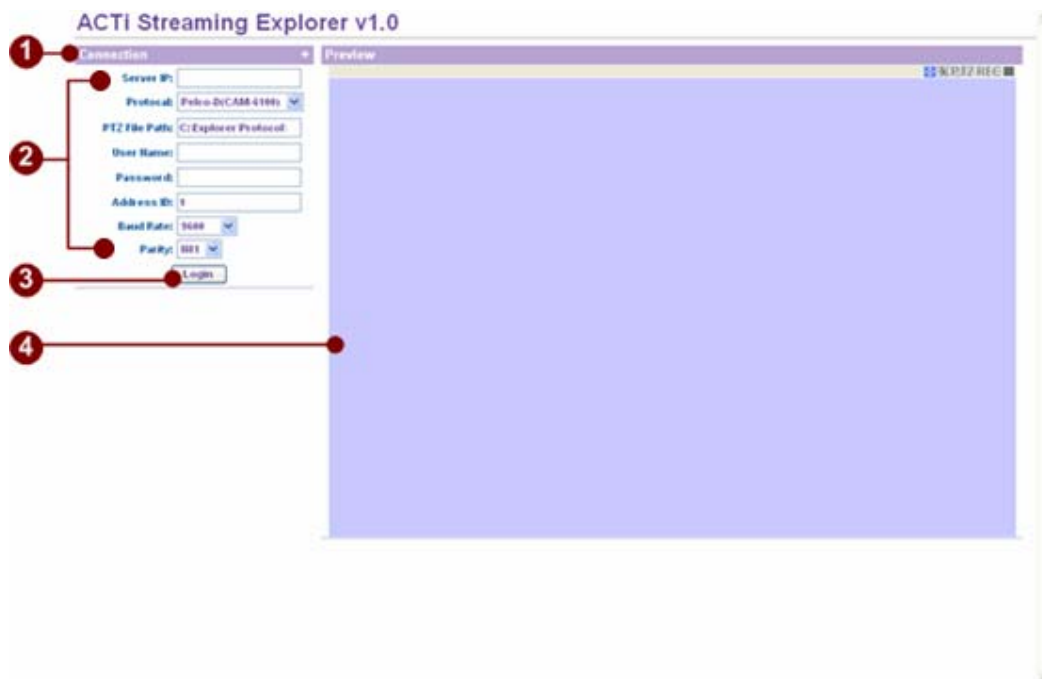


Figure 1. Login Page

1. Click the symbol “—”, the hide the settings of this area.  
Click the symbol “+”, the display the settings of this area.
2. The title of this setting area.
3. IP camera/video server connection information
4. Click the login button, Streaming Explorer will use the IP camera/video server connection information above to connect.
5. Media window: It will display the video streaming from the connected video server or IP camera.



## Connection Setting

The screenshot shows a 'Connection' dialog box with the following fields and settings, each indicated by a red circle and a number:

- 1. Server IP: (empty text box)
- 2. Protocol: Pelco-D(CAM-6100) (dropdown menu)
- 3. PTZ File Path: C:\Explorer\Protocol\ (text box)
- 4. User Name: (empty text box)
- 5. Password: (empty text box)
- 6. Address ID: 1 (text box)
- 7. Baud Rate: 9600 (dropdown menu)
- 8. Parity: 1181 (dropdown menu)
- 9. Login (button)

Figure 2. The Setting of Connection

1. **Connect to the video server with unicast (TCP) connection.**



**NOTE:** You may enter host name address in this field as well. Make sure the host name can be resolved by DNS (Domain Name Server) in your network environment. This operation can also be verified by using ping command:

C: \>ping hostname.acti.com

2. **Select your PTZ file.**
3. **Set your PTZ file path. The default folder is C:\Explorer\protocol. That's the default protocol folder of the installation program.**



**NOTE:** Make sure the PTZ file exist in correct file path.

4. **The account to be authorized by the video server.**
5. **The password to be authorized by the video server.**
6. **Camera address ID.**
7. **Baud rate setting.**
8. **Parity setting.**
9. **Byte size setting.**
10. **Stop bit setting.**

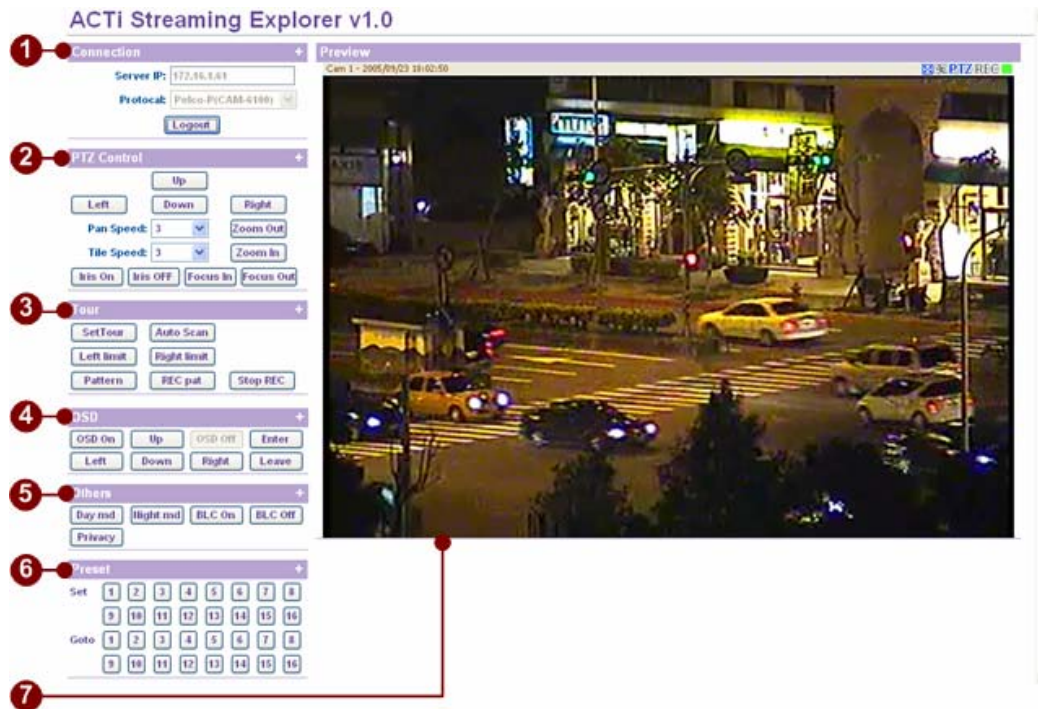
## 3

## Streaming Explorer User Interface

ACTi Streaming Explorer is designed with a user-friendly interface, and deployed with minimal training.

# Understating the User Interface

ACTi Streaming Explorer user interface is consisted of several parts.



**Figure 3.** ACTi Streaming Explorer User Interface

1. **Connection Setting:** This panel displays connection setting.
2. **Logout Button:** Click the button to close connection.
3. **PTZ Control:** This panel sends PTZ command to connected device..
4. **Zoom Control:** This panel sends “Zoom” 、”Focus” 、”Iris” command to connected device,without “Pan” 、”Tile” command.
5. **Tour:** This panel sends patrol command.
6. **OSD:** Ths panel controls the OSD menu.
7. **Others:** Ths panel sends the others fuctions of camera.
8. **Preset:** Save and go to the position to the position indicator.
9. **Preview:** This window links to the media source, including a live video stream from network or video stream from file.

## Panel Definition

Potocols that ACTi Streaming Explorer v1.0 supports,and their panel functions.

CAMERA	PTZ	PTZControl	ZoomControl	Tour	OSD	Other	Preset
<b>CAM-6100</b>							
	Pelco-D	V			V		V
	Pelco-D(CAM-6100)	V			V		V
	Pelco-P	V		V	V	V	V
	Pelco-P(type1)	V		V	V	V	V
	Pelco-P(CAM-6100)	V		V	V	V	V
	VCL	V					V
<b>CAM-6200</b>							
	Pelco-D(CAM-6200)	V			V		V
	Pelco-P(type2)	V			V		V
	Pelco-P(CAM-6200)	V			V		V
<b>CAM-5130</b>							
	Kampro		V		V		

**Figure 4.** ACTi Streaming Exploper v1.0 panel Definition



**NOTE:** Make sure your camera setting conform to the protocol that you select.

## Connection Information

**Figure 5.** Connection Information

1. **Server IP:** The server that being connected.
2. **Potocal:** The protocol that being used.
3. **LogOut:** Click this button to close connection.

# PTZ Control

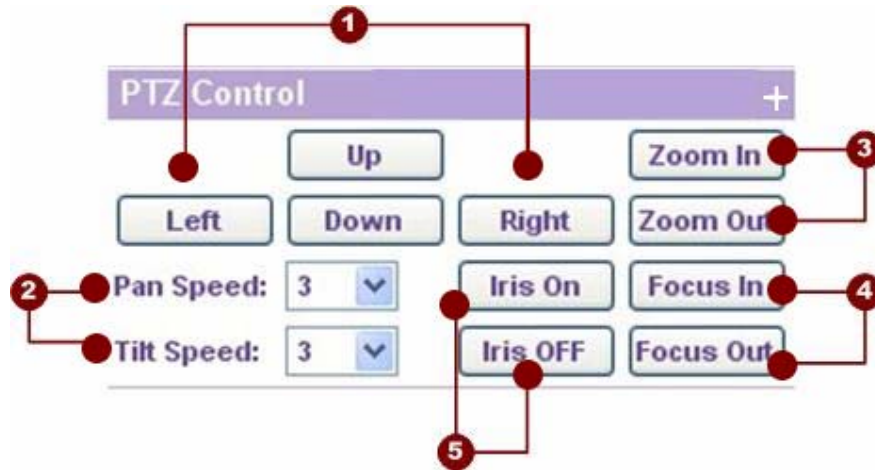


Figure 6. PTZ Control Panel

1. **PanTile Control:** Click Right 、 Left button to pan right 、 left.  
Click Up 、 Down button to tilt up 、 down.
2. **PanTileSpeed Setting:** Select Pan 、 Tilt Speed. Maximum is 5, minimum is 1.
3. **Zoom Control:** Click “Zoom In” button to zoom in the view, click “Zoom Out” button to zoom out the view.
4. **Focus Control:** Click “Focus In” button to move the focus forward, click “Focus Out” button to move the focus backward..
5. **Iris Control:** Click “Iris On” button to increase the Iris, click “Iris Off” button to decrease Iris.

# Zoom Control



Figure 7. PTZ Control Panel

1. **Zoom Control:** Click “Zoom In” button to zoom in the view, click “Zoom out” button to zoom out the view.
2. **Focus Control:** Click “Focus In” button to move the focus forward, click “Focus Out” button to move the focus backward.
3. **Iris Control:** Click “Iris On” button to increase the Iris, click “Iris Off”

button to decrease Iris.

## Tour Control

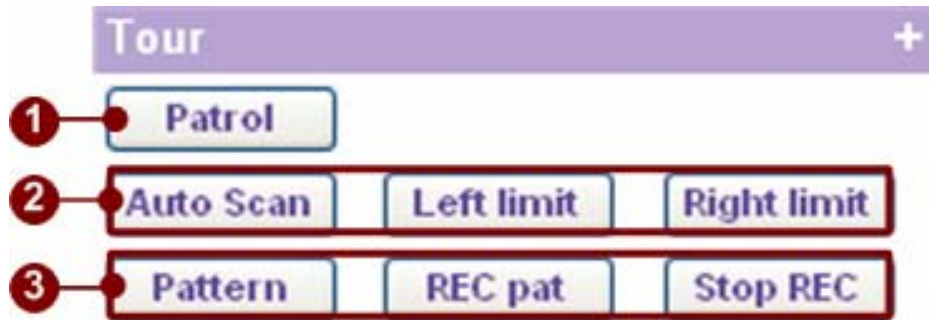


Figure 8. Tour Control Panel

1. **PRESET Control:** By clicking this button, Streaming Explorer will start patrol with preset positions 1~16. (For some speed dome, it will go through only presets enabled in its OSD menu. Be sure to read the OSD manual first and enable these presets if necessary.)
2. **Auto Scan Control:**
  - Move the camera to specific location then click Left 、 Right limit button to define current position as the Left, Right limit of auto scan control.
  - Click “Auto Scan” button to start auto scan. It will now patrol between the right limit and the left limit you previously set.
3. **Pattern Control:** This button can enable the pattern tour function of the speed dome. Pattern tour function enables the speed dome repeat the speed dome pattern of a period of time’s manual operation.
  - Click “REC pat” to start to record the manual operation pattern.
  - Click “Stop REC” to stop recording the manual operation pattern.
  - Click “Pattern” to repeat the pattern tour of previous record.

## OSD Control

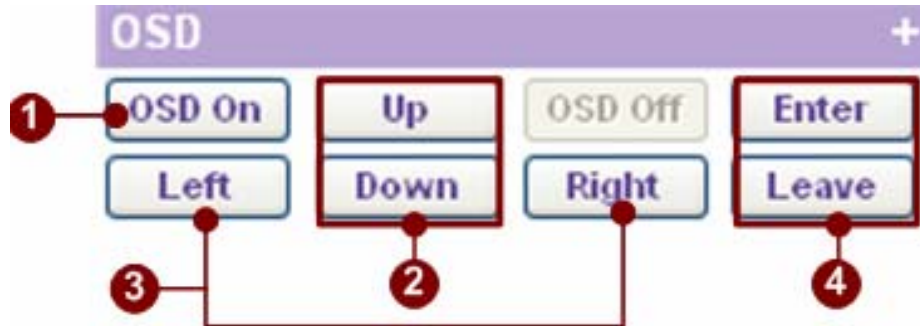


Figure 9. OSD Control Panel

1. **OSD On-Off Control:** Each speed dome has its original OSD menu for advanced settings. This OSD menu has nothing to do with the network setup. Click the “OSD On” button to open speed dome OSD menu. Click “OSD Off” button to close the OSD menu.
2. **OSD Left-Right Control:** Click Left 、 Right to move the cursor left or right in the speed dome OSD menu.
3. **OSD Up-Down Control:** Click Up 、 Down to move the cursor up or down in the speed dome OSD menu.
4. **OSD Enter-Leave Control:** Click Enter 、 Leave to enter or leave an item in the OSD menu.

## Others Control



Figure 10. Others Control Pane

1. **Day & Night Control:** Click “Day md” to set camera to Day Mode. Click “Night md” to set camera to Night Mode.
2. **BLC Control:** Click “BLC on” to enable the Backlight Compensation function. Click “BLC Off” to disable the Backlight Compensation function.
3. **Privacy Masking:** Click “Privacy” to start to setup privacy masking function. This function needs to be activated via Camera OSD otherwise, it won’t effect. For setup procedure please refer to the operation manual of

respective speed dome.

## Preset Control

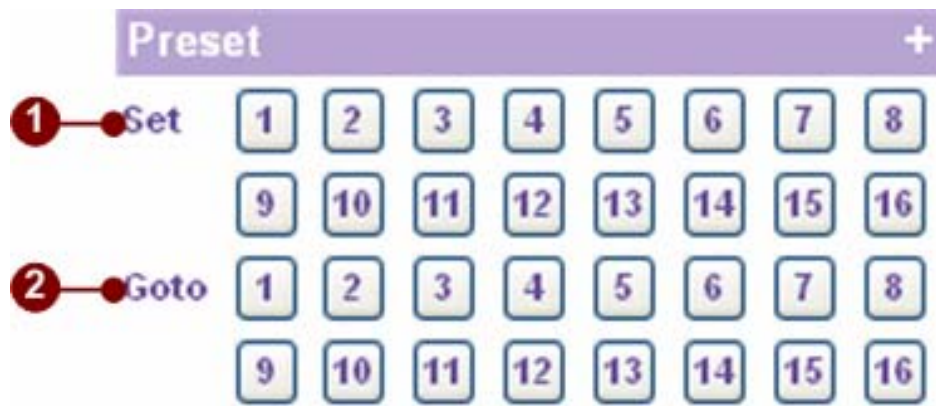


Figure 11. Preset Control Pane

1. **Set number #:** Save current positions as the preset number #.
2. **Go to number #:** Go to the position number as set before.